

2020 HEDIS measures update

(effective January 1, 2020)

Retired measures:

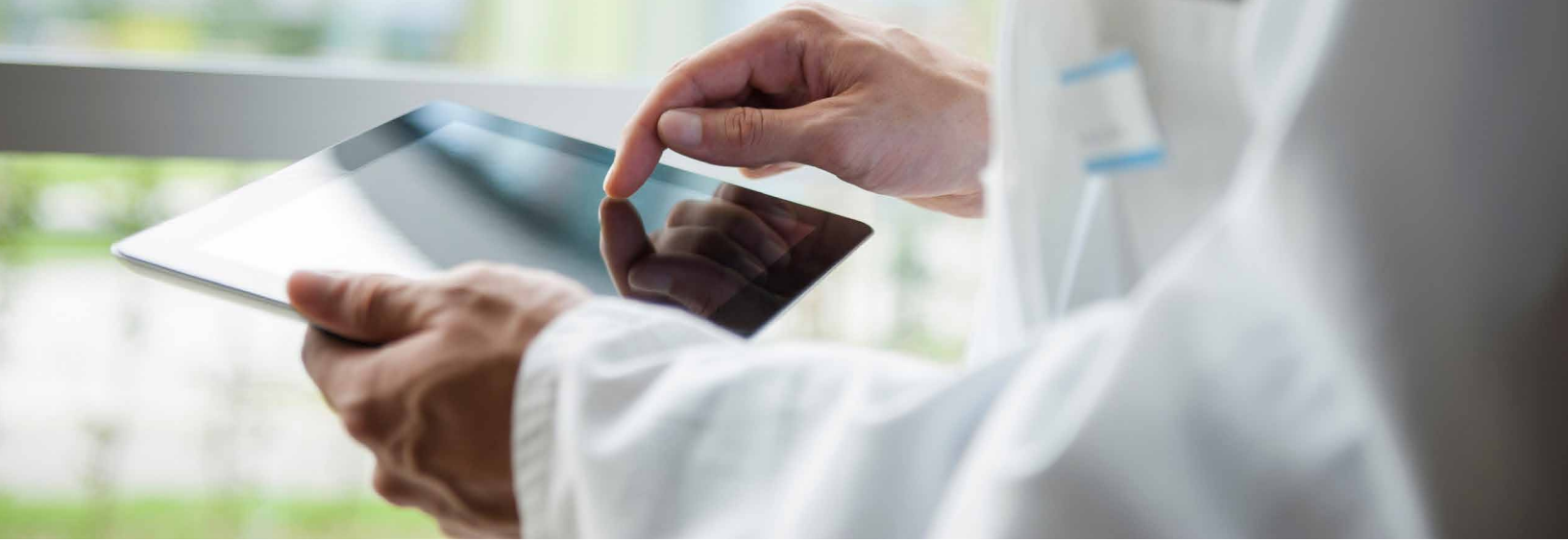
ABA — Adult BMI Assessment

MRP — Medication Reconciliation Post-Discharge

CAP — Children’s and Adolescents’ Access to Primary Care Practitioners

Measures with revisions:

Measure	Update/revision
<p>W30 — Well-Child Visits in the First 30 Months of Life</p>	<ul style="list-style-type: none"> • Replace W15 with W30. • No hybrid data collection. • Combines W15 (six well visits) with additional two well visits in the time frame of 15 months and 30 months.
<p>WCV — Adolescent Well-Care Visits and Well-Child Visits in the Third, Fourth, Fifth and Sixth Years of Life</p>	<ul style="list-style-type: none"> • Replaces AWC and W34 with WCV. • No hybrid data collection. • 3 to 21 years as of December 31 of the measurement year. Report three age stratifications and total rate: <ul style="list-style-type: none"> • 3 to 11 years • 12 to 17 years • 18 to 21 years • Total (The total is the sum of the age stratifications for each product line.) • Supplemental data are considered an administrative data source; however, for the Effectiveness of Care (EOC) measures and utilization measures similar to EOC (W30 and WCV), numerator events identified using supplemental data are reported separately from numerator events identified by administrative (claims/encounter) and medical record data, as indicated in the applicable Data Elements for Reporting tables. • Any data found in a supplemental data source are considered a supplemental data hit if the member would not be compliant for the measure/indicator without the data source. If supplemental data are not used, report zero in the <i>Numerator events by supplemental data</i> element. For all other measures, numerator events identified using supplemental data are reported in the <i>Numerator events by administrative data</i> element. Refer to <i>General Guideline 31: Supplemental Data</i> for supplemental data requirements. • For the Transitions of Care (TRC) measure, there are two numerators where administrative reporting is not available, only medical record data can be used.



Measures with revisions: (cont.)

Measure	Update/revision
WCC — Weight Assessment and Counseling for Nutrition and Physical Activity for Children/Adolescents	<ul style="list-style-type: none"> • Yes for hybrid collection. • Removed the exclusion of member-reported biometric values (body mass index, height and weight). • Added a note to clarify that services rendered during a telephone visit, e-visit or virtual check-in meet criteria for the Counseling for Nutrition and Counseling for Physical Activity indicators.
CIS — Childhood Immunization Status	<ul style="list-style-type: none"> • Yes to hybrid collection. • Added a requirement that LAIV (influenza) vaccination must occur on the child's second birthday (LAIV not recommended until child turns 2; therefore, only compliant for LAIV flu on second birthday).
LSC — Lead Screening in Children	<ul style="list-style-type: none"> • Yes to hybrid collection. • Removed the limits to the Ages column in the Rules for Allowable Adjustment of HEDIS® section.
CCS — Cervical Cancer Screening	<ul style="list-style-type: none"> • Yes to hybrid collection. • Added palliative care as a required exclusion. • Updated the Hybrid Specification to indicate that sample size reduction is allowed. • Clarified that documentation of <i>vaginal hysterectomy</i> meets criteria for documentation of hysterectomy with no residual cervix (optional exclusion). • Added the <i>Number of required exclusions</i> data element to the Data Elements for Reporting table. • Added guidance adjusting required exclusions criteria in the Rules for Allowable Adjustments section.

Measures with no revisions:

IMA — Immunizations for Adolescents

<https://provider.simplyhealthcareplans.com> • <https://provider.clearhealthalliance.com>

Simply Healthcare Plans, Inc. is a Managed Care Plan with a Florida Medicaid contract. Simply Healthcare Plans, Inc. dba Clear Health Alliance is a Managed Care Plan with a Florida Medicaid contract. Simply Healthcare Plans, Inc. is a Managed Care Plan with a Florida Healthy Kids contract.